

Inside this Issue

Energy Weather.....1

Ag Weather.....3

Conferences.....4

Energy Weather

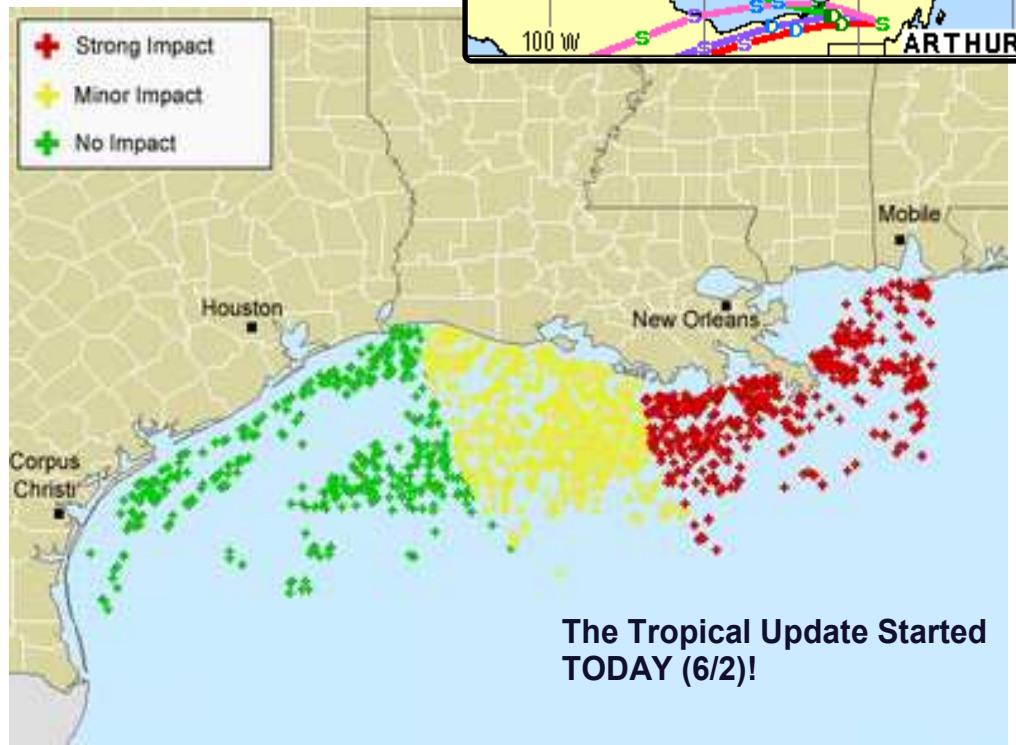
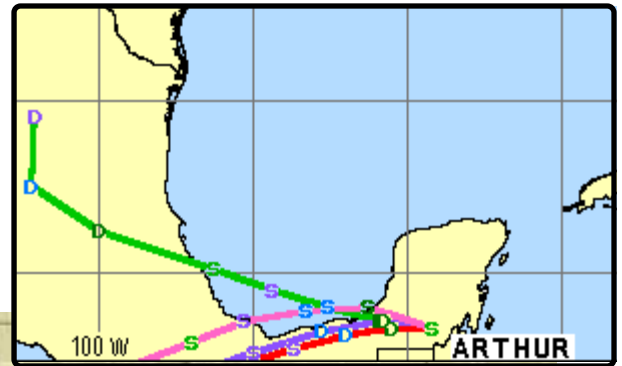
Now that we just had our first tropical storm of the season (TS Arthur) it is now time to start switching gears and think about the tropics. For fifteen years, MDA EarthSat Weather has produced the Tropical Update during the hurricane season.

The official report (.pdf) gets sent out at 5:30am ET and again at 11:30am ET. Probability of tropical development and Gulf impacts are addressed.

The web-based portion of the Tropical Update denotes all the GOM wells that are impacted by an impending system. A specific percentage of company production loss is displayed for each track update that occurs (see example below).

If there is a system brewing, the rapid tropical model e-mails get blasted 24/7 and instantaneously to clients alerting of track shifts and intensity revisions (see TS Arthur example below).

A valued part of the Tropical Update is unlimited phone consultation with a meteorologist 24/7, including weekends and holidays.



The Tropical Update Started TODAY (6/2)!

MDA Federal Inc.
 MDA EarthSat Weather
 6011 Executive Blvd.,
 Suite 400
 Rockville, MD 20852
 Ph# 240.833.8300
 Fx# 240.833.8301

www.mdafederal.com/wx/



Energy Weather continued...

The MDA EarthSat Evening Report has been around for several years and has recently undergone some key upgrades including: *All in One Place...*

Collective assessment of all afternoon and evening weather model runs- all on the final report *Quick Comparisons...*

Analysis and quick map comparisons with MDA EarthSat official 6-10 and 11-15 day outlooks *Forecast the Forecast...*

Maps and written text that anticipates how the official 6-10 and 11-15 day outlooks should change the next morning

An example of the .pdf portion of the Evening Report is shown to the right

MDA EarthSat's DynaCast, an interactive climate analog tool that is excellent for historical analyses, forecasting, and presentations by meteorologists, analysts, and traders, has undergone some additional upgrades:

- * Forecaster consensus analogs (temperature and precipitation)
- * NAO analogs
- * QBO analogs
- * Coming Soon: MJO analogs!
- ENSO analogs and city output still included!

MDA EarthSat's Models Page/Update has undergone a recent face lift and upgrades. The top portion of the Models Page is shown below. Later this month, look for more info regarding the ongoing upgrades.

[Feedback/Questions?](#)

OPERATIONAL NEWS | GENERAL NEWS

NEW FEATURES! [View 6-15 Day Anomalies for the Past 24 Hours](#) | [High Speed GFS North America Maps](#)

The PJM Weather/Load product, like the ERCOT version, recently went through an upgrade last month, including:

- * Separation of weather section vs. load
- * T-storm monitoring - impacting load
- * Station forecasts for load zones

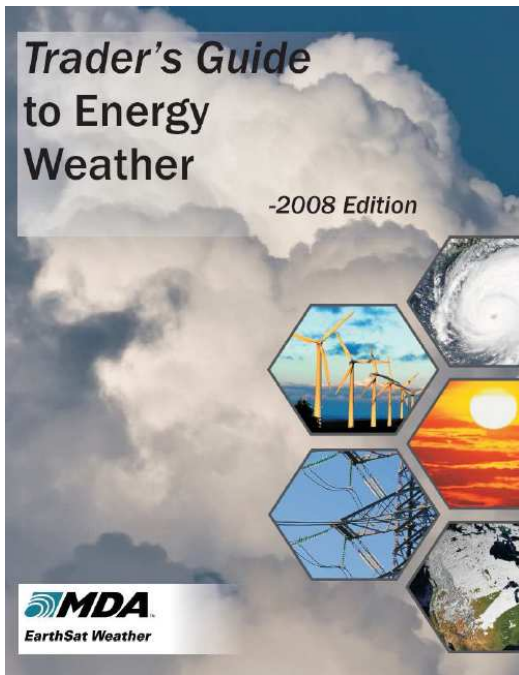
A valuable product as we head into summer!

For more information about energy weather products or to sign up, please contact **Chris Hyde** at christopher.hyde@mdafederal.com or phone direct at 240.833.8322

www.mdafederal.com/wx/



Energy Weather continued...

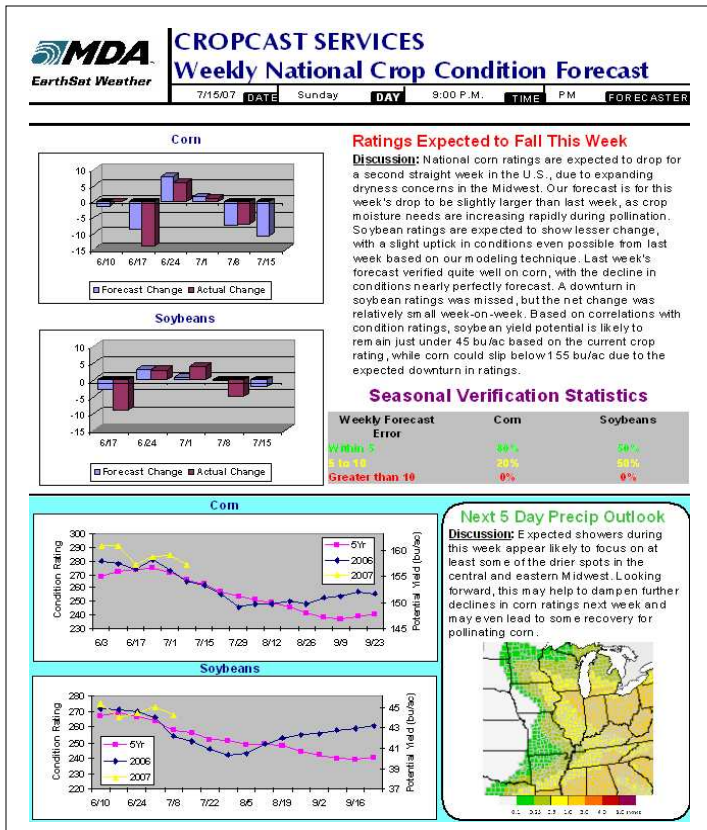


The 2008 edition of the Trader's Guide to Energy Weather was launched last month. If you have not received your copy, please let us know. Some of the data and graphs are refreshed vs. last year's edition and there is also an extensive weather models section with interpretation and analysis addressed. Updated sections include La Niña, MJO and climate change. A view of of the this year's guide cover is shown to the left.

For more information about energy weather products or to sign up, please contact Chris Hyde at christopher.hyde@mdafederal.com or phone direct at 240.833.8322

www.mdafederal.com/wx/

Agricultural Weather



This week, CropCast will launch the unique Weekly National Crop Condition Forecast product. This NEW service allows traders and analysts to prepare for market volatility by projecting weekly forecasts of changes in the USDA corn and soybean ratings the night before the USDA release. This service also includes:

- Forecast error analysis to evaluate skill
- Comparison of current season to previous season's ratings and 5-year average
- Objective determination of potential crop yields based on current conditions
- Discussion of expected changes in crop conditions during coming week

An example of the product is shown to the left.

For more information about ag weather products or to sign up, please contact Joel Widenor at joel.widenor@mdafederal.com or phone direct at 240.833.8238

www.mdafederal.com/wx/



Conferences

The 2nd Annual MDA EarthSat Weather Course for Analysts and Traders, in April, was a success despite some flooding in the metro Washington D.C. area impacting network activities. We had experts from the University of Wisconsin and NOAA conducting the presentations. Thanks for all who took part in the event! If you are a trader and in need of a weather course, we can accommodate your schedule and conduct a one day or two day course at your office or here at our corporate offices.

The Joint MDA EarthSat/PIRA Energy Conference took place last month in New York City. The conference included a seasonal forecast panel and a hurricane expert from NHC. Thanks for all who attended the event! The fall version of this conference will take place in Houston, on Monday, November 3rd.

For details of all upcoming conferences, please log onto:

<http://www.earthsat.com/conferences/>



The 7th Annual EarthSat Conference for Weather Analysts will take place Wednesday, October 8th through Friday, October 10th at the beautiful Wynn Las Vegas resort (picture of resort in lower left). The detailed agenda is complete and can be found in the conferences website link.

We will be having a tropical panel, seasonal forecast panel and once again bring back the weather derivatives panel. Other speakers will address climate change, natural gas supply/demand and MJO. Networking opportunities have been set up over golf, a welcome reception, cocktail reception, comedy show and park tour of Red Rock Canyon.

We are once again proud to have the following sponsors this year:



Sign up today as space/seating is limited!

For more information about conferences or to register, please contact Chris Hyde at christopher.hyde@mdafederal.com or phone direct at 240.833.8322

www.mdafederal.com/wx/

Thanks for your business!

Your input into product development is very much appreciated.